

---

## Product Information

# CUMAL

--- Cuminaldehyde ---

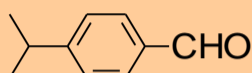


MITSUBISHI GAS CHEMICAL COMPANY, INC.

---

### Description

Cuminaldehyde is a clear colorless liquid.  
Chemical formula: C<sub>10</sub>H<sub>12</sub>O



Molecular weight: 148.2

---

### Typical Properties

Appearance, visual	Clear colorless liquid
Purity, %	99.5
Color, HAZEN	10
Boiling Point, °C	235.5
Melting Point, °C	Not known
Vapor Pressure, 89°C, mmHg	6
Acid value, mgKOH/g	0.1
Specific gravity, 20°C	0.979
Odor	Aromatic odor
Solubility	Soluble in ethanol, ether and toluene Insoluble in water

---

### Sales Specifications

Purity, GC, %	96 min
Color, spectrophotometry, HAZEN	100 max
Acid value, titration, mgKOH/g	3 max

---

### Applications

Additives for resins, Pharmaceutical intermediate  
Agricultural intermediate, Flavor and Fragrance

---

### Container Information

Available in isocontainers and 190 Kgs steel drums.

---

### Precautions for Safe Handling and Use

#### Extinguishing media

Small fire: Carbon dioxide,  
Large fire: Water spray or alcohol foam

#### Health safety precautions

Avoid contact with eyes, skin and clothing.  
Avoid breathing vapor.  
Wash thoroughly the face, the hands after handling.

#### Storage conditions

Store in cool and dry place.

For specific safety, handling and toxicity information,  
please refer to the current Material Safety Data Sheet.

---

#### **First Aid**

##### **If inhaled**

Remove to fresh air immediately. Call a physician.

##### **Skin contact**

Wash skin thoroughly with a plenty of soap and water  
while removing contaminated clothing and shoed.

##### **Eye contact**

Immediately flush eyes with a plenty of water enough.  
Call a physician.

##### **If swallowed**

Induce vomiting if victim is conscious. Call a physician.  
Never give anything by mouth to an unconscious person.

---

#### **Chemical Registration Numbers**

CAS: 122-03-2

EINECS: 204-516-9

---

The information presented herein is believed to be accurate and reliable, but is presented without guarantee or responsibility on the part of Mitsubishi Gas Chemical Company. It is the responsibility of the users to comply with all applicable laws and regulations and to provide for a safe workplace. The user should consider any health or safety hazards or information contained herein only as a guide, and should take those precautions which are necessary or prudent to instruct employees and to develop work practice procedures in order to promote a safe work environment. Further, nothing contained herein shall be taken as an inducement or recommendation to manufacture or use any of the herein materials or processes in violation of existing or future patents.



#### **mitsubishi GAS CHEMICAL COMPANY, INC.**

##### **America**

655 Third Avenue 24th Floor, New York, NY 10017 U.S.A. TEL: 1-212-687-9030 FAX: 1-212-687-2810

##### **Europe**

Immermannstr.13, D-40210 Dusseldorf, Germany TEL : 49-211-363080 FAX : 49-211-354457

##### **Singapore**

24 Raffles Place #16-01 Clifford Centre, Singapore 048621 TEL : 65-6224-0059 FAX : 65-6224-6079

##### **Thailand**

195, Empire Tower, 18Floor, Unit 1810, Sathorn Rd., Yannawa, Sathorn, Bangkok, Thailand TEL : 66-2-670-3417 FAX : 66-2-670-3419

##### **Head Office**

5-2, 2-chome, Marunouchi, Chiyoda-ku, Tokyo 100-8324 Japan TEL: 81-3-3283-4812 FAX: 81-3-3214-0938