

Product Information

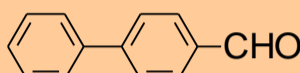
4-BPAL

--- p-Phenylbenzaldehyde ---



MITSUBISHI GAS CHEMICAL COMPANY, INC.

Description p-Phenylbenzaldehyde is a clear white solid.
Chemical formula: C₁₃H₁₀O



Molecular weight: 182.2

Typical Properties		
Appearance, visual	Clear white solid	
Purity, %	99.7	
Color, HAZEN	60	
Boiling Point, °C	320	
Melting Point, °C	58	
Vapor Pressure, 150°C, mmHg	3	
Acid value, mgKOH/g	0.1	
Specific gravity, 20°C	1.107	
Odor	Aromatic odor	
Solubility	Soluble in alcohol	Insoluble in water

Sales Specifications	Purity, GC, %	98 min
	Acid value, titration, mgKOH/g	3 max

Applications Additives for resins, Pharmaceutical intermediate
Agricultural intermediate, Flavor and Fragrance

Container Information Available in 180 Kgs steel drums.

Precautions for Safe Handling and Use

Extinguishing media

Small fire: Carbon dioxide,
Large fire: Water spray

Health safety precautions

Avoid contact with eyes, skin and clothing.
Avoid breathing vapor.
Wash thoroughly the face, the hands after handling.

Storage conditions

Store in cool and dry place.

For specific safety, handling and toxicity information,
please refer to the current Material Safety Data Sheet.

First Aid**If inhaled**

Remove to fresh air immediately. Call a physician.

Skin contact

Wash skin thoroughly with a plenty of soap and water while removing contaminated clothing and shoed.

Eye contact

Immediately flush eyes with a plenty of water enough.
Call a physician.

If swallowed

Induce vomiting if victim is conscious. Call a physician.
Never give anything by mouth to an unconscious person.

Chemical Registration Numbers

CAS: 3218-36-8

EINECS: 221-742-3

The information presented herein is believed to be accurate and reliable, but is presented without guarantee or responsibility on the part of Mitsubishi Gas Chemical Company. It is the responsibility of the users to comply with all applicable laws and regulations and to provide for a safe workplace. The user should consider any health or safety hazards or information contained herein only as a guide, and should take those precautions which are necessary or prudent to instruct employees and to develop work practice procedures in order to promote a safe work environment. Further, nothing contained herein shall be taken as an inducement or recommendation to manufacture or use any of the herein materials or processes in violation of existing or future patents.

**mitsubishi GAS CHEMICAL COMPANY, INC.****America**

655 Third Avenue 24th Floor, New York, NY 10017 U.S.A. TEL: 1-212-687-9030 FAX: 1-212-687-2810

Europe

Immermannstr.13, D-40210 Dusseldorf, Germany TEL : 49-211-363080 FAX : 49-211-354457

Singapore

24 Raffles Place #16-01 Clifford Centre, Singapore 048621 TEL : 65-6224-0059 FAX : 65-6224-6079

Thailand

195, Empire Tower, 18Floor, Unit 1810, Sathorn Rd., Yannawa, Sathorn, Bangkok, Thailand TEL : 66-2-670-3417 FAX : 66-2-670-3419

Head Office

5-2, 2-chome, Marunouchi, Chiyoda-ku, Tokyo 100-8324 Japan TEL: 81-3-3283-4812 FAX: 81-3-3214-0938